

CARACTERISTIQUES DES MATERIAUX
- Béton C30/37 - XF3 XC4 - fck = 30 MPa
- Aciers B500B - fyk = 500 MPa
- Enrobage = 5 cm

DIAMETRES MINIMAUX DE CINTRAGE DES ACIERS H.A									
Diamètres	8	10	12	14	16	20	25	32	40
Etriers	32	40	48	56	64				
Ancrages		100	120	140	160	200	250	320	400
Coudes		150	180	210	240	300	375	480	600

Diam	ACIER HAUTE ADHERENCE			ACIER DOUX		
	Longueur totale	Poids au ml.	Poids total (KG)	Longueur totale	Poids au ml.	Poids total (KG)
6	-	0.222	-	-	0.222	-
8	394.82	0.395	156.0	-	0.395	-
10	-	0.617	-	-	0.617	-
12	-	0.888	-	-	0.888	-
14	-	1.208	-	-	1.208	-
16	-	1.578	-	-	1.578	-
20	-	2.466	-	-	2.466	-
25	-	3.854	-	-	3.854	-
32	-	6.313	-	-	6.313	-
		TOTAL	156.0			TOTAL

POIDS TOTAL = 156 kg
----------------------

AFFAIRE

Projet  
Jardin de l'ARS  
à Bordeaux (33)

Ouvrage sur noue Espace Vert

B.E.T. GENIE CIVIL



E.T.L. Structures

94, Bd Vivier Merle - 69003 LYON  
Tél : 04.72.36.30.64  
Fax : 04.72.36.92.20  
Mail : contact@etudes-techniques-lyonnaises.fr

ENTREPRISE

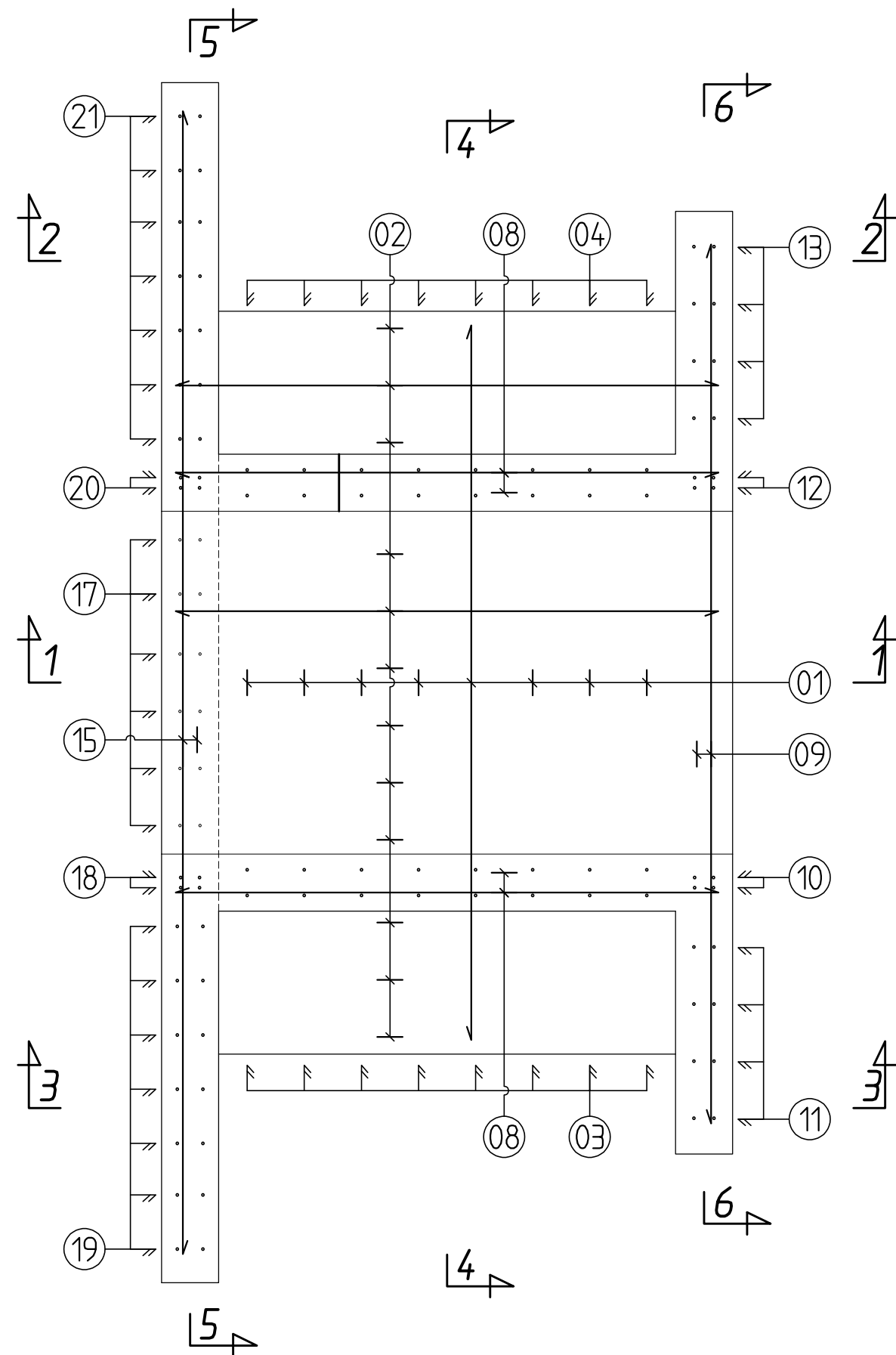


F		
E		
D		
C		
B		
A	17.03.2025	Màj Plan de ferrailage
O	04.09.2024	Première émission – 5 pages
IND	DATES	MODIFICATIONS

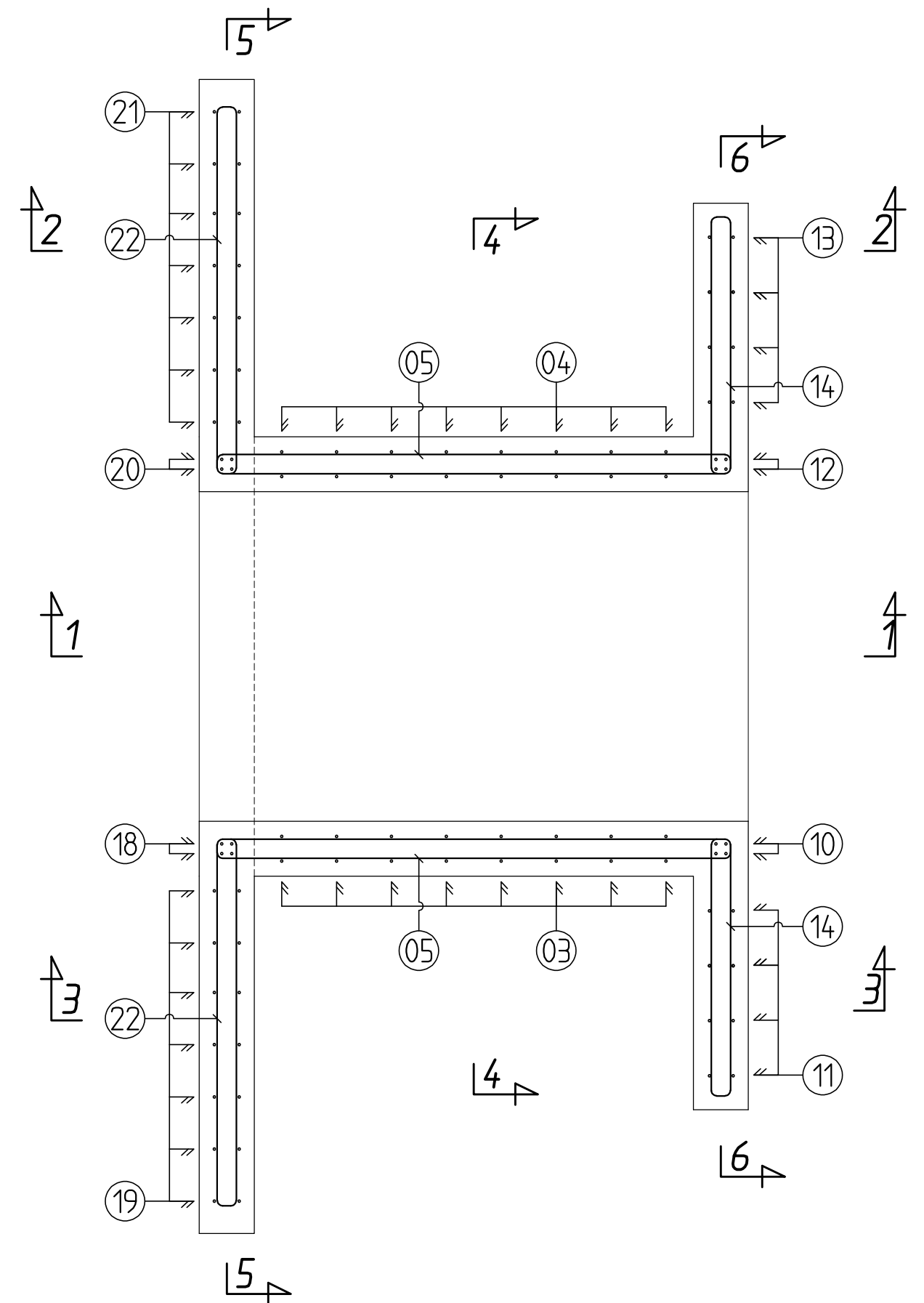
Ouvrages du bâtiment 3B  
Armatures

	NOMS	DATES	NUMERO D’AFFAIRE	NUMERO DU PLAN	IND.
REALISE	L.BOUKHBIZA	17.03.2025	5317	GC 02	A
VERIFIE	M.ABDALLAH	17.03.2025			

VUE EN PLAN DU RADIER  
(1/20)

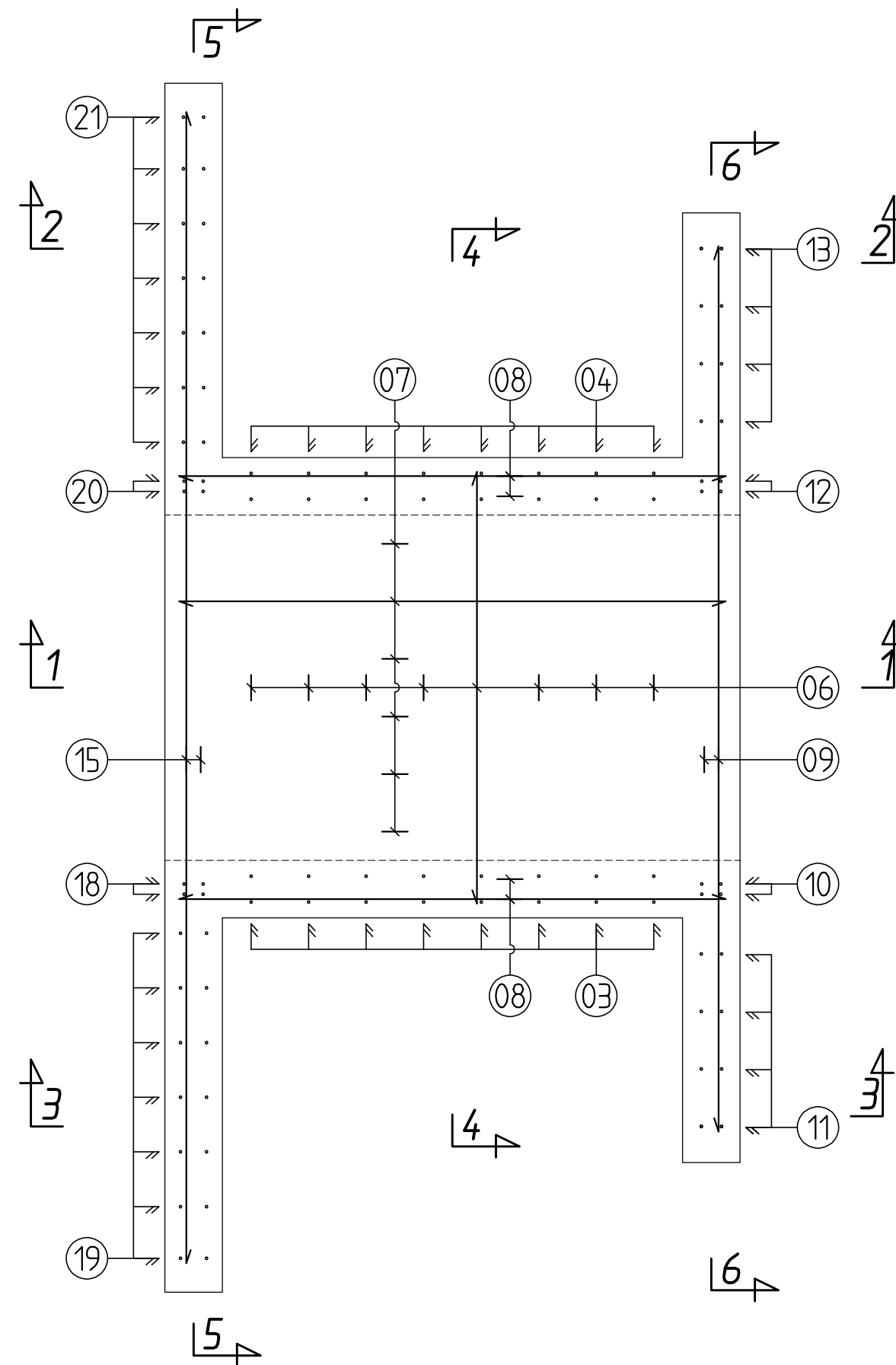


VUE EN PLAN DES VOILES  
(1/20)

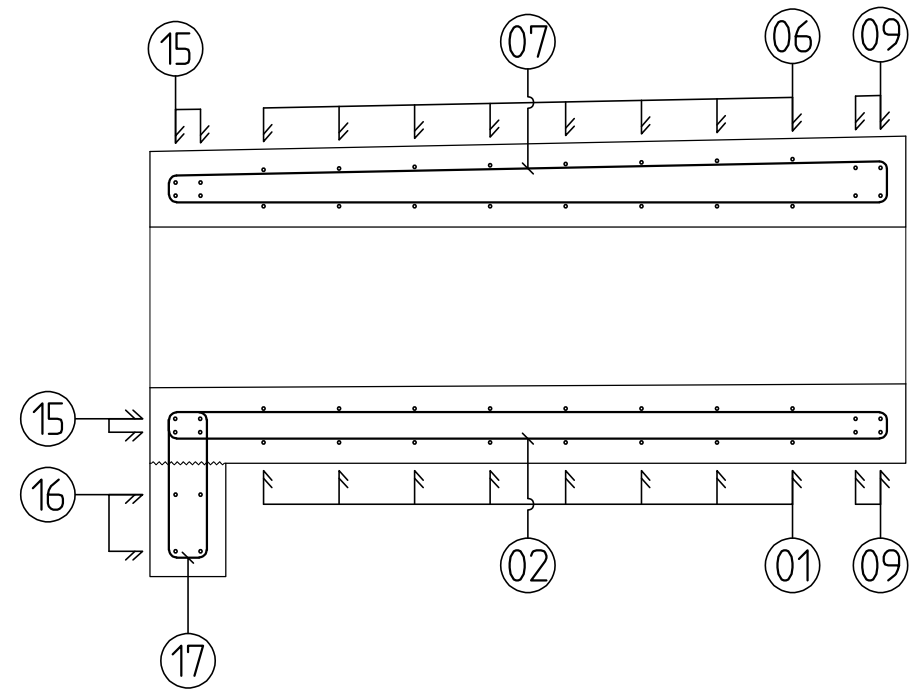


# VUE EN PLAN DE LA TRAVERSE

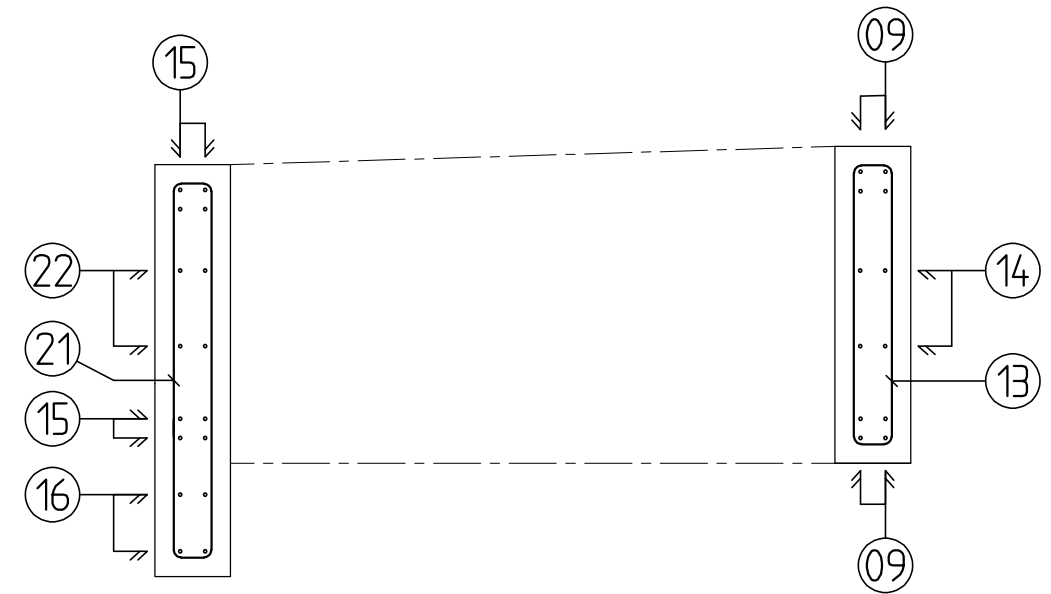
(1/20)



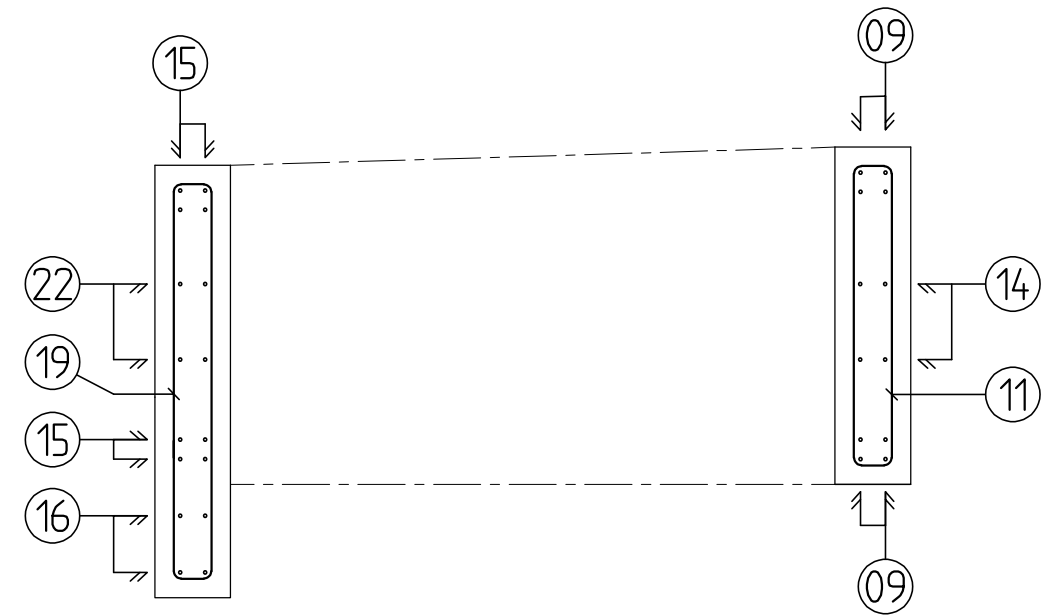
COUPE 1.1  
(1/20)



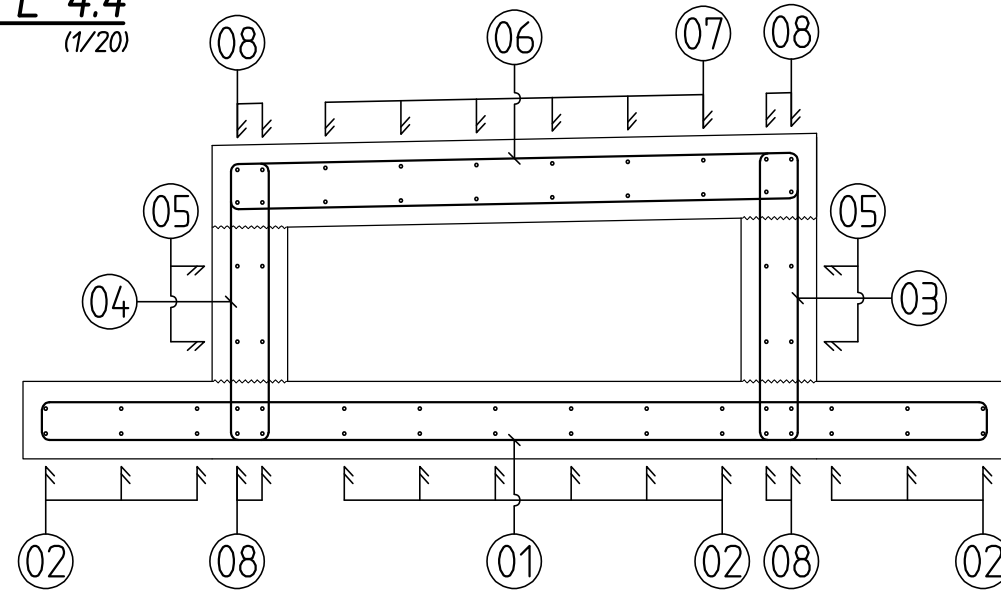
COUPE 2.2  
(1/20)



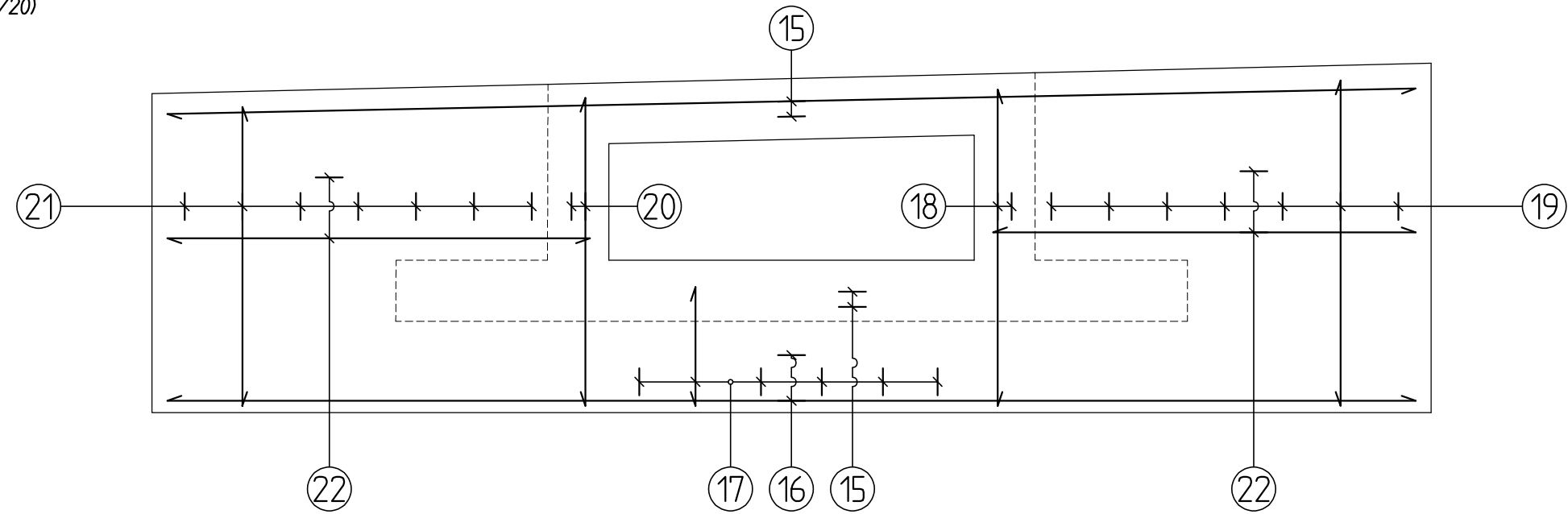
COUPE 3.3  
(1/20)



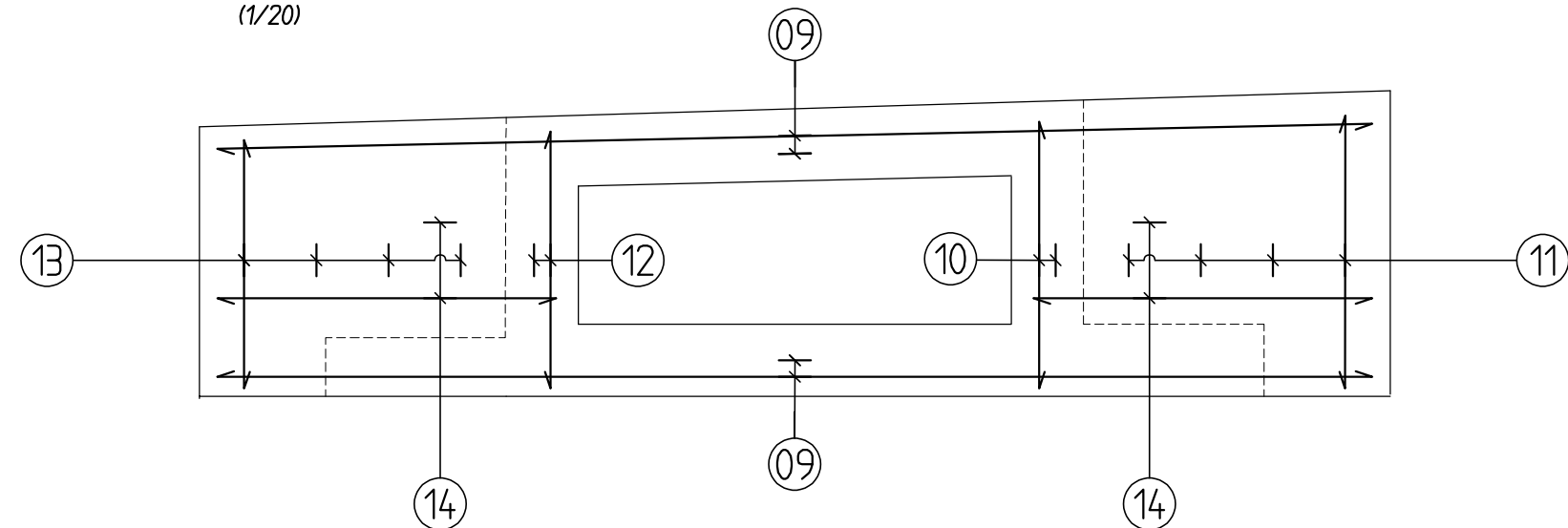
COUPE 4.4  
(1/20)

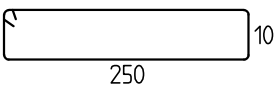
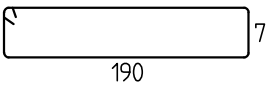
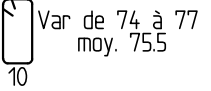
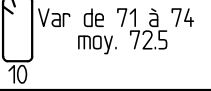
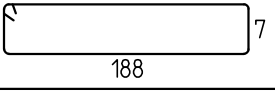
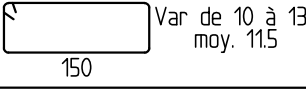
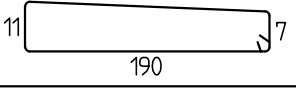
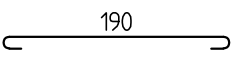
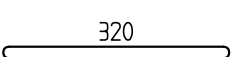
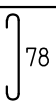
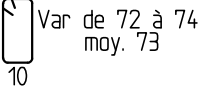
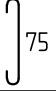
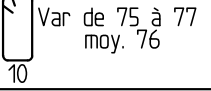
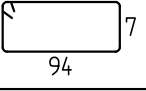
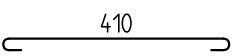


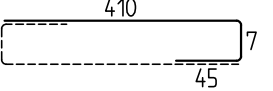
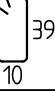
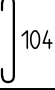
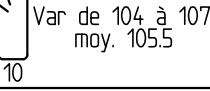
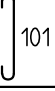
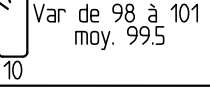
COUPE 5.5  
(1/20)



COUPE 6.6  
(1/20)



		φ		ESP	Nombre Barres		Lg d'une barre (m)	Lg totale (m)	Façonnage et Observation (cm)
		HA	ADX		Détail	Total			
A	01	8	,	20	,	8	5.35	42.80	
	02	8	,	20	,	12	4.09	49.08	
	03	8	,	20	,	8	1.86	14.88	
	04	8	,	20	,	8	1.80	14.40	
	05	8	,	20	2x2	4	4.05	16.20	
	06	8	,	20	,	8	3.38	27.04	
	07	8	,	20	,	6	4.13	24.78	
	08	8	,	vp	4x4	16	2.06	32.96	
A	09	8	,	vp	2x4	7	3.36	23.52	
	10	8	,	vp	,	4	0.94	3.76	
A	11	8	,	20	,	4	1.81	7.24	
	12	8	,	vp	,	4	0.91	3.64	
A	13	8	,	20	,	4	1.87	7.48	
A	14	8	,	20	2x2	4	2.17	8.68	
	15	8	,	vp	2x4	8	4.26	34.08	

	φ		ESP	Nombre Barres		Lg d'une barre (m)	Lg totale (m)	Façonnage et Observation (cm)
	HA	ADX		Détail	Total			
16	8	,	15	2x2	4	4.62	18.48	
17	8	,	20	,	6	1.13	6.78	
18	8	,	vp	,	4	1.20	4.80	
19	8	,	19	,	8	2.46	19.68	
20	8	,	vp	,	4	1.17	4.68	
21	8	,	19	,	7	2.34	16.38	
22	8	,	20	2x2	4	3.37	13.48	